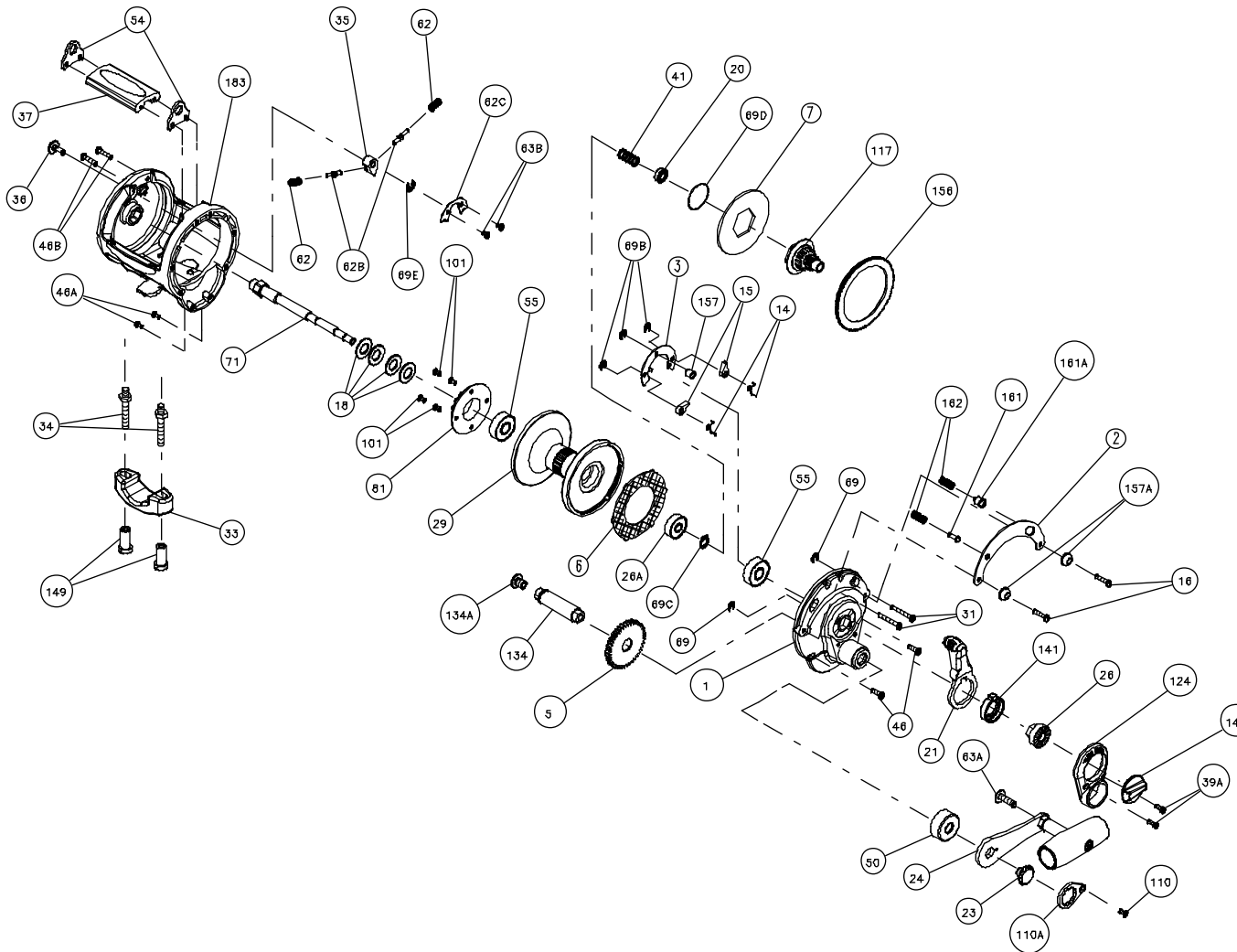




PARTS LIST FOR MODELS 10LD AND 15LD



KEY NO.	DESCRIPTION	PART NO.
1	Right-Side Plate Assembly	001 015KG
2	Quadrant Ring	002 015KG
3	Dog Bridge	003 015KG
5	Main Gear	005 015LD
6	Drag Washer	006 015KG
7A	Metal Drag Washer	007 015KG
13	Pinion Gear	013 015KG
14	Dog Spring (2 req.)	014 015KG
15	Dog (2 req.)	015 015KG
16	Side Plate Screw (2 req.)	016 060CH
18	Disc Clutch Spring (4 req.)	018 050TW
20	Spindle Ball Bearing	020 4200
21	Eccentric Lever	021 015KG
23	Handle Screw	023 114
24	Handle Complete	024 015LD
24A	Handle Blank	024 015LD-1
24C	Handle Knob	024C050
25	Handle Knob	025 050
26	Bushing	026 015KG
26A	Spool Ball Bearing	026 040
29	Spool (10LD only)	029L010LD
	Spool (15LD only)	029L015LD
31	Long Screw (2 req.)	031 015KG
33	Rod Clamp (10LD only)	033 113
	Rod Clamp (15LD only)	033 340
34	Rod Clamp Screw (2 req.)	034 975
35	Click Tongue	035 310N
36	Click Button	036 015KG
37	Top Spacer Bar (10LD only)	037A010LD
	Top Spacer Bar (15LD only)	037A015LD
39A	Bridge Screw (2 req.)	039 015KG
41	Spindle Spring	041 015KG
46	Short Screw (2 req.)	046 750
46A	Frame Screw (2 req.)	032 002
46B	Long Frame Screw (2 req.)	046 9500
50	Gear Stud Shield	050 015KG
54	Harness Lug (2 req.)	054 015KG
55	Ball Bearing (2 req.)	055 050
62	Click Söpring	062 545
62B	Click Pin (2 req.)	062B525
62C	Click Spring Cover	062C015KG
63A	Handle Stud Screw	063A050
63B	Spring Cover Screw (2 req.)	063 500S
63C	Screw	063 050
69	Retaining Ring (2 req.)	069B050
69B	Retaining Ring (3 req.)	069B600
69C	Spindle Retaining Ring	069C015KG
69D	Retaining Ring	069D015KG
69E	Retaining Ring	069B600
71	Spool Spindle (10LD only)	071 010KG
	Spool Spindle (15LD only)	071 015KG
81	Click Ratchet	081 040
91	Handle Rivet	091N050
101	Ratchet Screw (4 req.)	101 030
110	Handle Lock Screw	110 050
110A	Handle Locking Plate	110A050
117	Drive Plate	117 015KG
124	Bridge Cover	124 015KG
134	Gear Stud	134 015LD
134A	Gear Stud Screw	023 006CH
141	Cam Follower	141 015KG
144	Preset Knob	144 015KG
149	Rod Clamp Nut (2 req.)	149 045
156	Drag Cover	156 015KG
157	Spacer Bushing	157 050
157A	Spacer Bushing	157 015KG
161	Free Spool Button	161 025
161A	Strike Button	161 040
162	Button Spring (2 req.)	162 050
183	Frame	183 015KG

SPECIFICATIONS AND PRE-SETTING OF DRAG

	LINE CAPACITY	GEAR RATIO	LINE CLASS	STRIKE SETTING	FULL OR MAX. SETTING
15LD	600yds/30 lb	3.8-1 HIGH	30 lb	7-10 lbs	15-18 lbs
	550M/0,55 mm	2-1 LOW	15 kg	3-4,5 kg	7-8 kg
10LD	800yds/20 lb	3.8-1 HIGH	20 lb	4-7 lbs	10-12 lbs
	730M/0,45 mm	2-1 LOW	10 kg	1,8-3 kg	4,5-5,5 kg